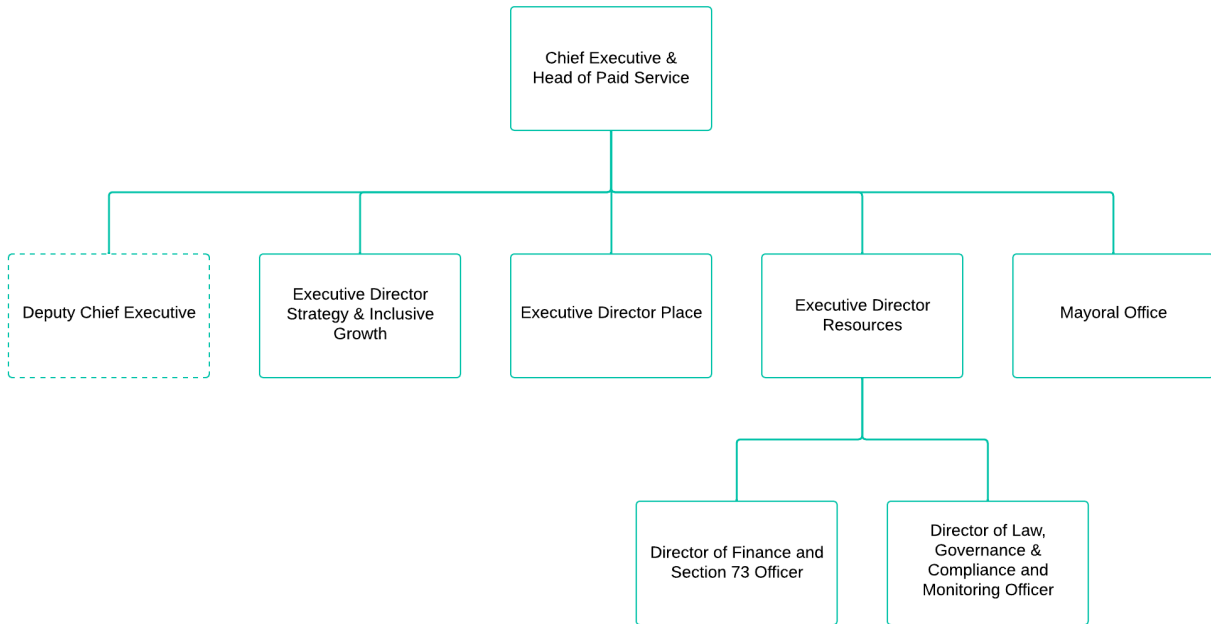


PART 7 – Management Structure

7.1 The East Midlands Combined County Authority Management Structure

Interim Management Structure

1.1 The Appointments Panel agreed an interim management structure in June 2024 to support the operation of the Combined County Authority as it moved through the process of permanent recruitment to Chief Officer posts.



Management Structure

1.2 The permanent management structure agreed by the Appointments Panel to be recruited to is set out below:

